



# SERVICE PARTS LIST

BUL. 54-06-1201

1/4" PISTOL DRILL

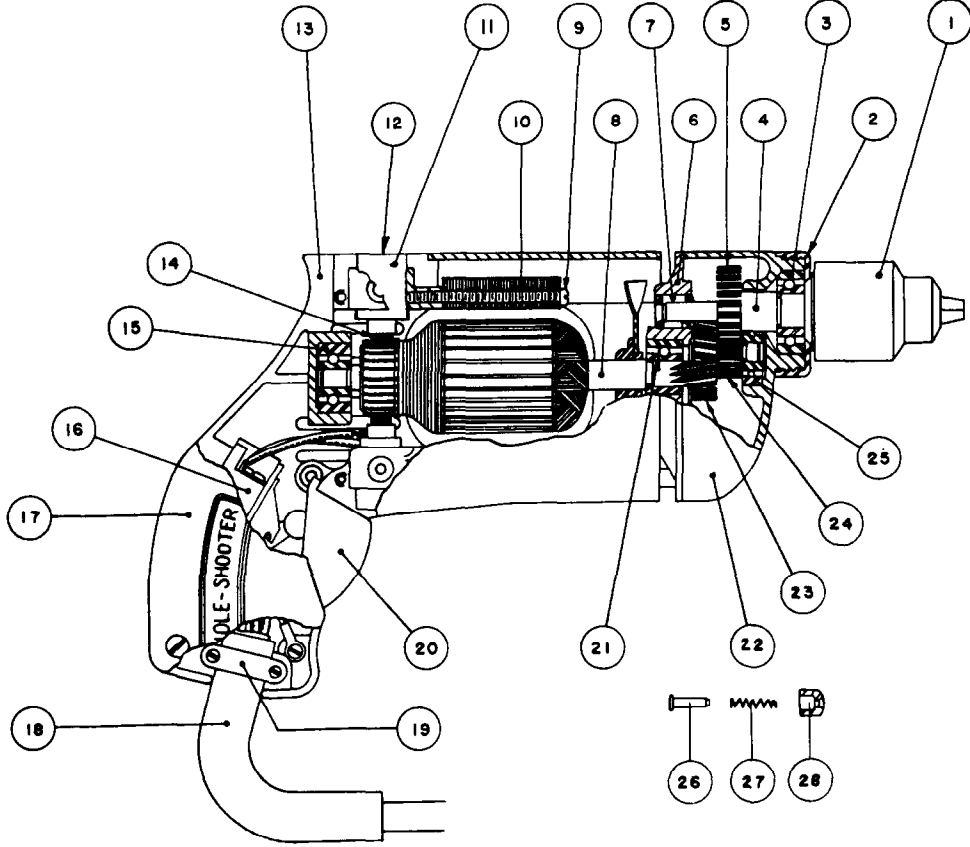
REVISED BUL 693-2      DATE FEB. '68

Catalog No. 0180

Starting Serial No. 93-1151

WIRING INSTR.

Both Model and Serial No. must be furnished to obtain correct parts.



CORRECTS AND SUPERCEDES SERVICE BULLETIN 693-2 DATED 3/27/58

FIG.	PART NO.	DESCRIPTION OF PART
1	48-66-0260	Chuck
2	42-52-0060	Bearing Cap
3	02-04-1020	Ball Bearing
4	38-50-1051	Spindle
5	32-75-1461	Spindle Gear
6	28-28-0221	Diaphragm
7	02-50-1640	Needle Bearing
8	16-22-1120	Armature Assembly
9	06-81-5950	6-32x1-7/8" Fil.Hd. Field Screws
10	18-22-1030	Field Assembly
11	22-22-0050	Brush Holder Assembly
12	23-44-0020	Brush Retaining Cap
13	28-50-4441	Motor Housing
14	22-18-0090	Carbon Brush Assemblies

ILLUSTRATED PARTS

FIG.	PART NO.	DESCRIPTION OF PART
15	02-04-0740	Ball Bearing
16	23-66-0280	Switch
17	28-20-3001	Handle Cover
18	22-64-0170	Cord Set
19	28-17-0400	Cord Clamp
20	28-92-0101	Switch Trigger
21	02-04-0880	Ball Bearing (Pinion End)
22	28-14-0361	Gear Case
23	32-40-1041	Intermediate Gear
24	36-66-1601	Intermediate Pinion Shaft
25	02-04-0640	Ball Bearing
26	44-70-0071	Trigger Lock Shaft
27	40-50-1200	Trigger Lock Spring
28	42-42-0061	Trigger Lock Button

MISCELLANEOUS PARTS NOT SHOWN

PART NO.	DESCRIPTION OF PART
06-83-0100	10-32x1/4" Hd'less Slotted Brush Holder Scs.
02-50-1210	Ball Bearing
06-81-6250	8-32x3/4" Fil.Hd.Sem Handle Cover Screws
06-81-5800	6-32x5/16" Fil.Hd.Sem Switch Mounting Sc.
06-42-0400	Woodruff Key
48-03-0010	Attachment Plug Adaptor
06-81-6200	8-32x5/8" Fil.Hd.Sem Handle Cover Screw

PART NO.	DESCRIPTION OF PART
06-81-6150	8-32x1/2" Fil.Hd.Sem Cord Clamp Screws
06-81-8625	6-32x1/4" (Brass) Rd.Hd.Ground Screw
06-81-6550	8-32x1-1/2" Fil.Hd.Sem Gear Case Scs.
06-81-6300	8-32x7/8" Fil.Hd.Sem Gear Case Screws
12-98-0600	Name Plate
48-66-3200	Chuck Key
06-42-0800	Woodruff Key
06-81-4300	3-48x3/16" Rd.Hd.Name Plate Screws