



SERVICE PARTS LIST

BUL. 54-06-0803

1/4" PISTOL DRILL

REVISED BUL 54-06-0803 DATE Aug. '70

Catalog No. 0140

Starting Serial No. **91-5262**

WIRING INSTR. **58-01-0010**

Both Model and Serial No. must be furnished to obtain correct parts.

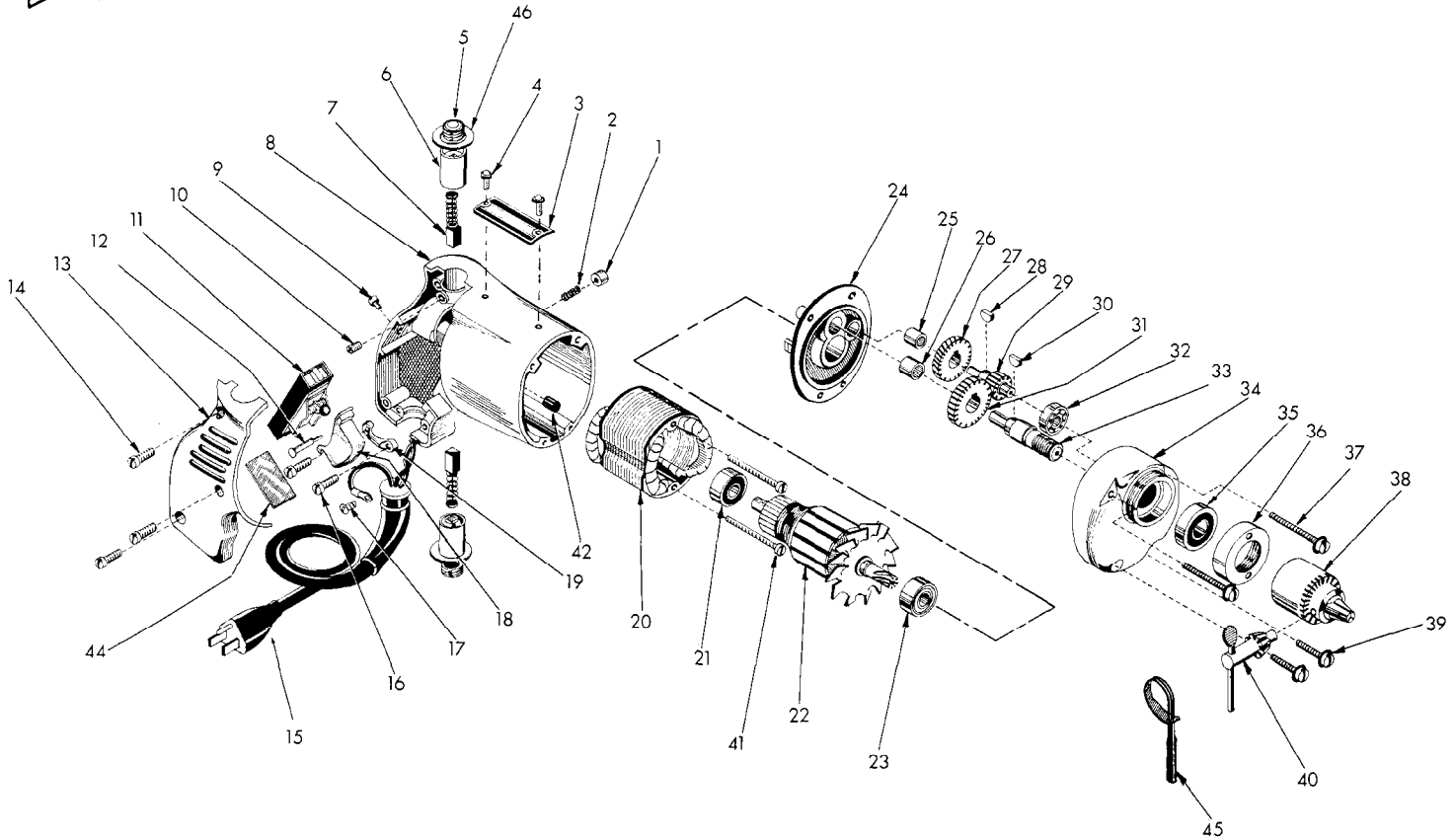


FIG.	PART NO.	DESCRIPTION OF PART	NO.REQ.	FIG.	PART NO.	DESCRIPTION OF PART	NO.REQ.
	1	Trigger Lock Button		24	28-28-0221	Diaphragm	
	2	Trigger Lock Spring		25	02-50-1210	Needle Bearing	
	3	Name Plate		26	02-50-1640	Needle Bearing	
★	4	Name Plate Screw	(2)	27	32-40-1041	Intermediate Gear	
	5	Brush Retaining Cap	(2)	28	06-42-0400	Woodruff Key	
	6	Brush Holder Assy.	(2)	29	36-66-1351	Intermediate Shaft	
	7	Carbon Brush Assy.	(2)	30	06-42-0800	Woodruff Key	
★	8	Motor Housing (Incl. item 1,2,12,13,14 & 42)		31	32-75-1281	Spindle Gear	
	9	6-32x5/16 Fil.Hd.Sems Switch Mtg. Screw		32	02-04-0640	Intermediate Shaft Ball Bearing	
★	10	10-32x1/4 Skt. Hd. Set Screw	(2)	33	38-50-1051	Spindle	
	11	Switch		34	28-14-0361	Gear Case	
★	12	Switch Lock Washers	(4)	35	02-04-1020	Ball Bearing	
	13	Trigger Lock Shaft		36	42-52-0060	Bearing Cap	
	14	Handle Cover		37	06-81-6550	8-32x1 1/2 Fil.Hd.Sems Gear Case Scrs.	(2)
	15	Cord Set		38	48-66-0260	Chuck	
	16	8-32x1/2 Fil.Hd.Sems Cord Clamp Scrs.	(2)	39	06-81-6300	8-32x7/8 Fil.Hd.Sems Gear Case Scrs.	(2)
	17	Ground Screw		40	48-66-3200	Chuck Key	
★	18	Switch Trigger		41	06-81-5950	6-32x 1-7/8 Fil. Hd. Field Screws	(2)
	19	Cord Clamp		42	45-30-0060	Ball Bearing Ret. Slug	
	20	Field Assy.		44	23-16-0265	Switch Insulator	
	21	Armature Ball Bearing (Comm. End)		45	48-66-4080	Key Holder	
	22	Armature Assy.		46	23-86-0070	Insulating Washer	(2)
	23	Armature Ball Bearing (Pinion End)					