



# SERVICE PARTS LIST

1/4" REV. SPEED CONTROL DRILL

Catalog No. 0102-1

Starting Serial No. 428-26932

BUL.54-06-0352

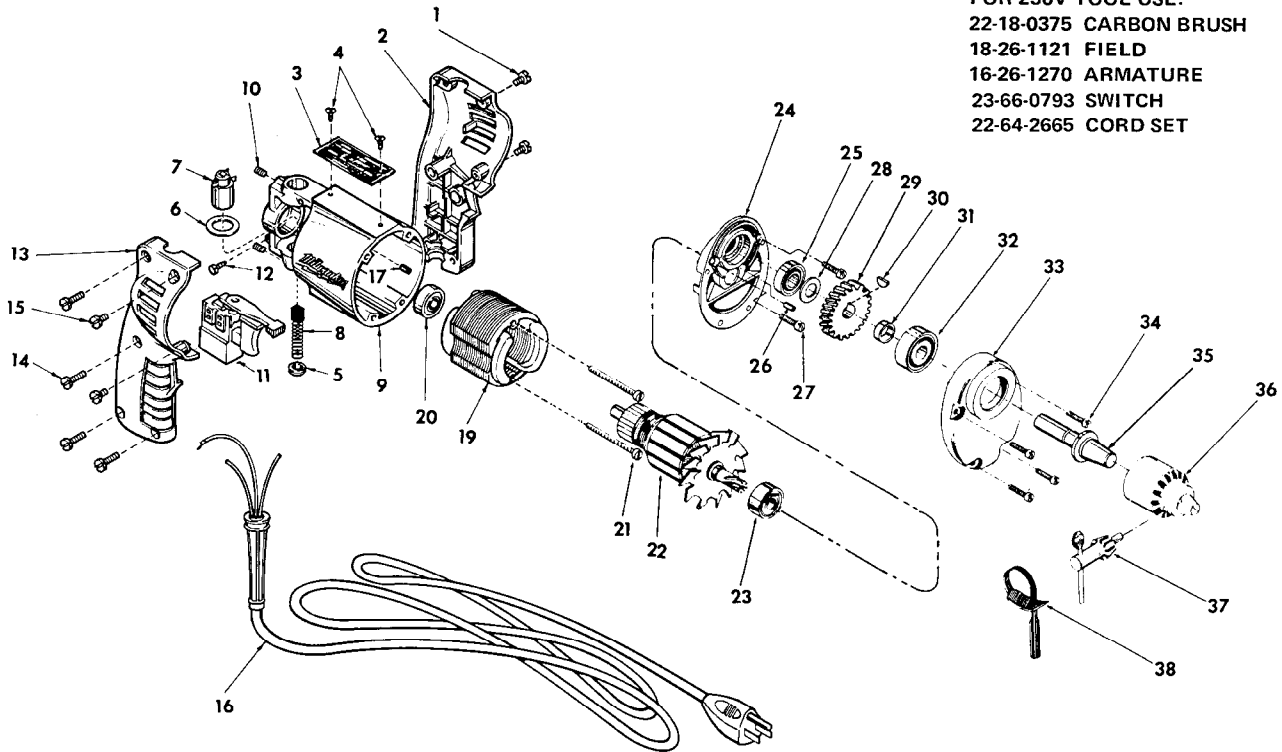
REVISED BUL. 54-06-0351

DATE Mar. '74

WIRING INSTRUCTIONS 58-01-0645

Specify Catalog and Serial No. when ordering parts

0-2500 R.P.M.



FOR 230V TOOL USE:  
 22-18-0375 CARBON BRUSH  
 18-26-1121 FIELD  
 16-26-1270 ARMATURE  
 23-66-0793 SWITCH  
 22-64-2665 CORD SET

FIG.	PART NO.	DESCRIPTION OF PART	NO. REQ.	FIG.	PART NO.	DESCRIPTION OF PART	NO. REQ.
	1	8-32x3/8 Pan Hd. Screw	(2)	21	06-81-5950	6-32x1-7/8 Fil. Hd. Field Screw	(2)
★	2	L.H. Handle Half	(1)	22	16-22-1280	Armature Assy.	(1)
	3	Nameplate Blank	(1)	23	02-04-0880	Ball Bearing	(1)
	4	6x1/4 Rd. Hd. Type Z Screw	(2)	24	28-28-0941	Diaphragm	(1)
	5	Brush Retaining Cap	(2)	25	02-08-0375	Ball Bearing	(1)
	6	Insulating Washer	(2)	26	45-30-0070	Ball Bearing Retaining Slug	(1)
	7	Brush Holder Assy.	(2)	27	06-81-6200	8-32x5/8 Fil. Hd. Sems	(2)
★	8	Carbon Brush Assy.	(2)	28	45-88-0250	Washer	(1)
	9	Motor Housing Assy. (Incl. item 17)	(1)	29	32-75-1901	Spindle Gear	(1)
	10	10-32x1/4 Brush Hldr. Set Screw	(2)	30	06-42-0400	Woodruff Key	(1)
★	11	Rev. Speed Control Switch	(1)	31	45-36-0641	Spindle Spacer	(1)
	12	6-32x1/4 Ground Screw	(1)	32	02-04-1040	Ball Bearing	(1)
★	13	R.H. Handle Half	(1)	33	28-14-1331	Gear Case	(1)
	14	8-32x3/4 Pan Hd. Screw	(4)	34	06-81-6300	8-32x7/8 Fil. Hd. Sems	(4)
	15	8-32x3/8 Pan Hd. Screw	(2)	35	38-50-5031	Spindle	(1)
★	16	Cord Set	(1)	36	48-66-0230	Chuck	(1)
	17	Ball Bearing Ret. Slug	(1)	37	48-66-3200	Chuck Key	(1)
	19	Field	(1)	38	48-66-4080	Key Holder	(1)
	20	Ball Bearing	(1)	★ 39	12-98-7081	Caution Plate (Not Shown)	(1)