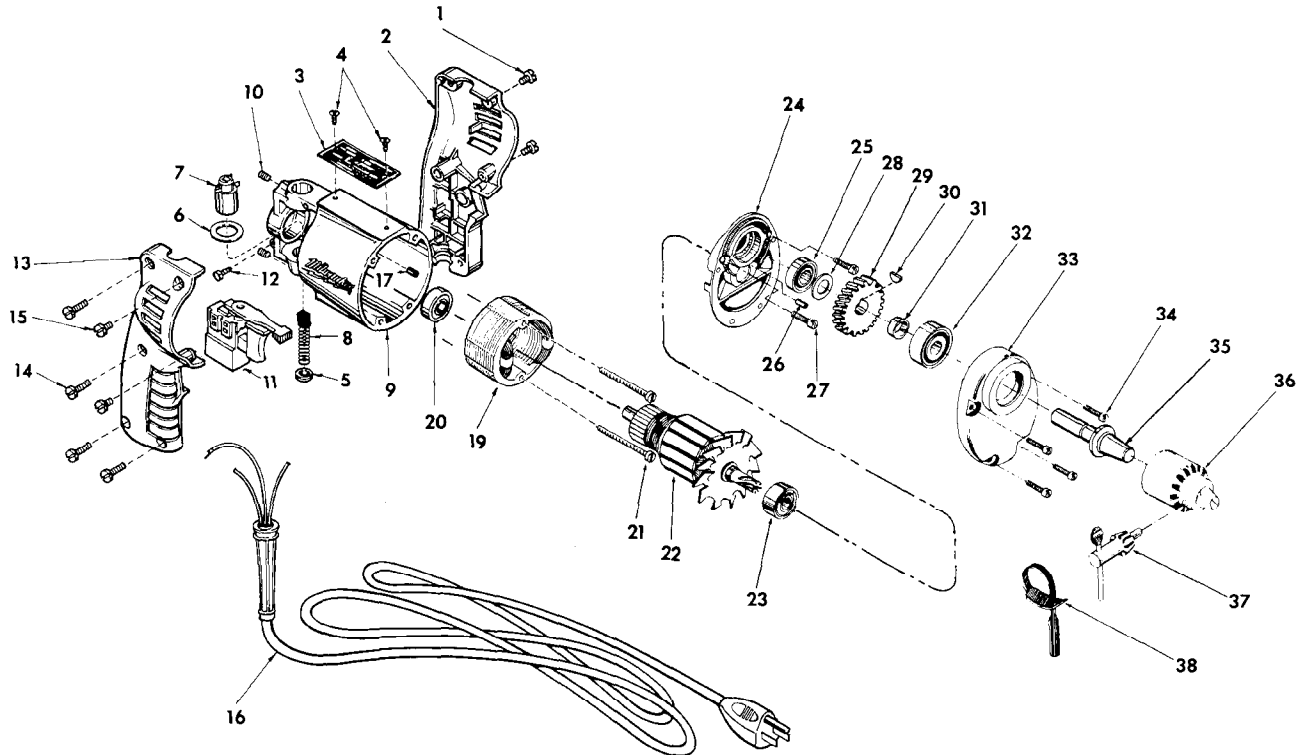




SERVICE PARTS LIST

BULLETIN NO.
54-06-0354

| | | | |
|--|---------------------------------------|--|-------------------|
| SPECIFY CATALOG NO. AND SERIAL NO. WHEN ORDERING PARTS | | REVISED BULLETIN 54-06-0353 | DATE March '85 |
| 1/4" T.S.C. REV. PISTOL DRILL | | | |
| CATALOG NO. 0102-1 | STARTING SERIAL NO. 428-108000 | WIRING INSTRUCTION 58-01-0651 | |
| CAT. NO. 0102-6 | START SER. NO. 428-108000 | BILINGUAL LABEL 10-98-6405 | |



| FIG. | PART NO. | DESCRIPTION OF PART | NO. REQ. | FIG. | PART NO. | DESCRIPTION OF PART | NO. REQ. |
|------|--|--|----------|--|---|---------------------------|----------|
| ★ | 1 | 06-95-0209 8-32 x 3/8 Taptite Screw | (2) | 21 | 06-81-5935 6-32x1-3/4 Fil. Hd. Field Screw | | (2) |
| ★ | 2 | 31-44-1355 L.H. Handle Half | (1) | ★ | 22 | 16-10-0305 Armature Assy. | (1) |
| ★ | 3 | 12-99-0027 Nameplate Blank | (1) | 23 | 02-04-0880 Ball Bearing | | (1) |
| 4 | 06-85-0200 6x1/4 Rd. Hd. Type Z Screw | (2) | 24 | 28-28-0941 Diaphragm | | (1) | |
| 5 | 23-44-0020 Brush Retaining Cap | (2) | 25 | 02-08-0375 Ball Bearing | | (1) | |
| 6 | 23-86-0105 Insulating Washer | (2) | 26 | 45-30-0070 Ball Bearing Retaining Slug | | (1) | |
| 7 | 22-22-1251 Brush Holder Assy. | (2) | 27 | 06-81-6202 8-32x5/8 Fil. Hd. Sems | | (2) | |
| ★ | 8 | 22-18-0362 Carbon Brush Assy. | (2) | 28 | 45-88-0250 Washer | | (1) |
| ★ | 9 | 28-50-6096 Motor Housing Assy. (Incl. Item 17) | (1) | 29 | 32-75-1901 Spindle Gear | | (1) |
| 10 | 06-83-2430 10-32x1/4 Brush Hldr. Set Screw | (2) | 30 | 06-42-0400 Woodruff Key | | (1) | |
| 11 | 23-66-1240 Rev. Speed Control Switch | (1) | 31 | 45-36-0641 Spindle Spacer | | (1) | |
| 12 | 06-81-8625 6-32x1/4 Ground Screw | (1) | 32 | 02-04-1040 Ball Bearing | | (1) | |
| ★ | 13 | 31-44-1360 R.H. Handle Half | (1) | 33 | 28-14-1331 Gear Case | | (1) |
| ★ | 14 | 06-95-0220 8-18x3/4 Thread Form Screw | (4) | 34 | 06-81-6300 8-32x7/8 Fil. Hd. Sems | | (4) |
| ★ | 15 | 06-95-0209 8-32 x 3/8 Taptite Screw | (2) | 35 | 38-50-5031 Spindle | | (1) |
| 16 | 22-64-0665 Cord Set | (1) | 36 | 48-66-0230 Chuck | | (1) | |
| 17 | 45-30-0120 Ball Bearing Ret. Slug | (1) | 37 | 48-66-3200 Chuck Key | | (1) | |
| 19 | 18-10-0050 Field | (1) | 38 | 48-66-4080 Key Holder | | (1) | |
| 20 | 02-04-0740 Ball Bearing | (1) | ★ | 39 | 10-98-5986 Warning Label (Not Shown) Omit For Canadian Tools | | (1) |