



SERVICE PARTS LIST

BULLETIN NO.
55-06-2826

SPECIFY CATALOG NO. AND SERIAL NO. WHEN ORDERING PARTS		REVISED BULLETIN	DATE
10mm DRILL		55-06-2825	Mar. 2008
CATALOG NO.	0101-50	WIRING INSTRUCTION	
STARTING SERIAL NO.	064B	58-03-1800	

★=Part number change from previous service parts list.

EXAMPLE:
Component Parts (Small #)
Are Included When Ordering
The Assembly (Large #).

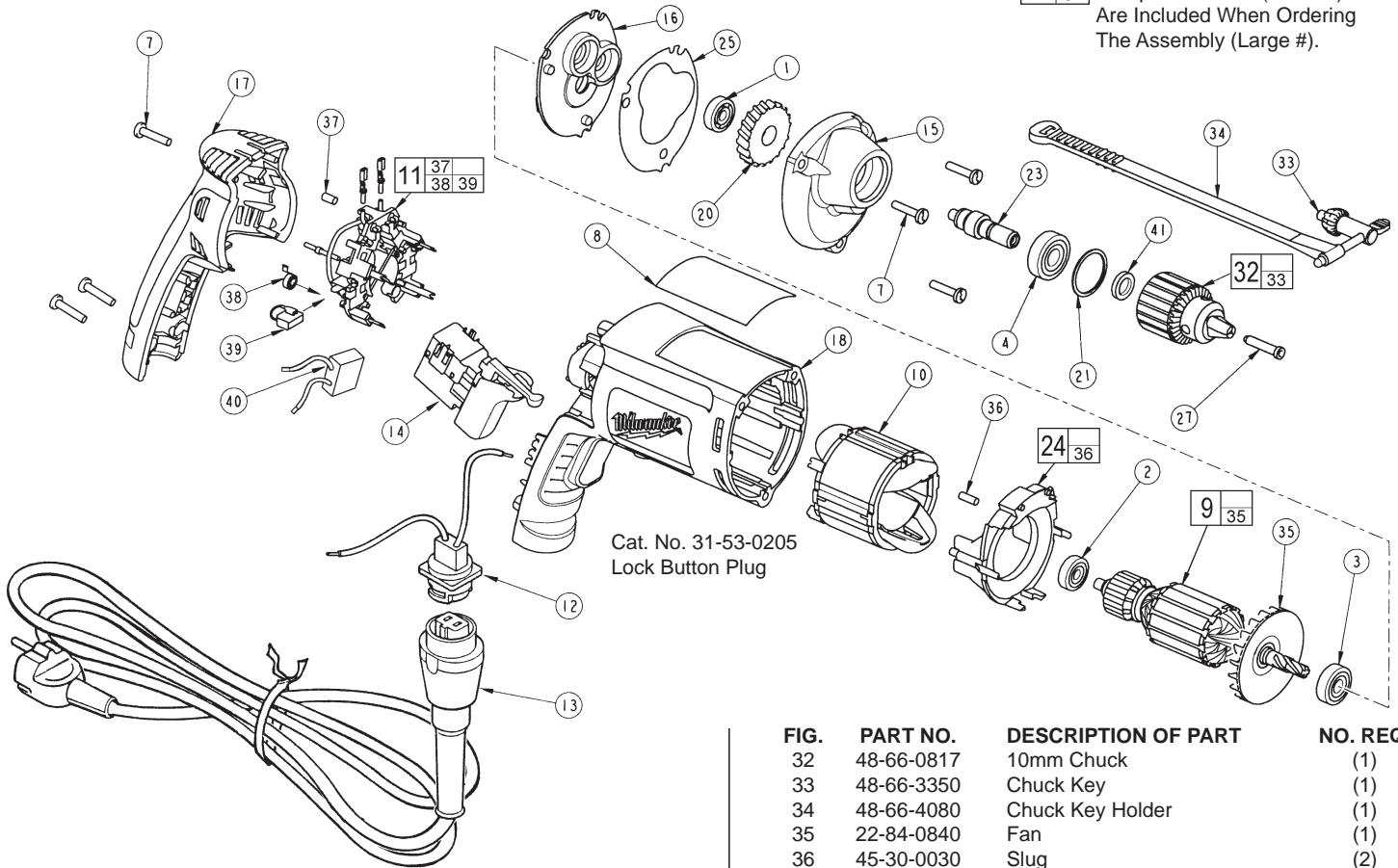


FIG.	PART NO.	DESCRIPTION OF PART	NO. REQ.
1	02-04-0640	Ball Bearing	(1)
2	02-04-0645	Ball Bearing	(1)
3	02-04-0852	Ball Bearing	(1)
★ 4	02-04-1019	Ball Bearing	(1)
7	06-82-7275	7-18 x 3/4 Slotted Plastite T-20	(6)
8	12-99-2680	Service Nameplate	(1)
★ 9	16-14-2201	Armature	(1)
10	18-04-2200	Field	(1)
11	22-18-1220	Brush Card Assembly	(1)
12	22-56-1015	Blade Housing Assembly	(1)
13	48-76-5012	Quik-Lok Cord Set	(1)
13	22-64-0684	Quik-Lok Cord Set (Australia)	(1)
14	23-66-2135	Switch	(1)
15	28-14-2385	Gearcase	(1)
16	28-28-2315	Diaphragm	(1)
17	31-15-2030	Handle Halve	(1)
18	31-50-2030	Motor Housing	(1)
★ 20	32-75-0121	Spindle Gear	(1)
21	34-80-1400	Retaining Ring	(1)
23	38-50-5745	Spindle	(1)
24	42-14-0460	Baffle Assembly	(1)
25	43-44-0985	Gasket	(1)
27	45-04-0750	Chuck Screw	(1)

FIG.	PART NO.	DESCRIPTION OF PART	NO. REQ.
32	48-66-0817	10mm Chuck	(1)
33	48-66-3350	Chuck Key	(1)
34	48-66-4080	Chuck Key Holder	(1)
35	22-84-0840	Fan	(1)
36	45-30-0030	Slug	(2)
37	45-30-0035	Slug	(1)
38	23-52-1610	Brush Spring	(2)
39	22-18-1320	Brush Assembly	(2)
40	22-33-0550	Suppressor	(1)
41	45-88-7940	Chuck Washer	(1)

FIG. LUBRICATION:
15 Place .24 oz. (6.8 grams) of type "Y" grease, No. 49-08-5270, at the armature pinion location in the gearcase pocket and push down .20".

Before assembly, lightly coat all press fit areas with type "Y" grease.