



SERVICE PARTS LIST

BUL. 54-06-0206

1/4" PISTOL DRILL

REVISED BUL.
54-06-0205

DATE
FEB '78

Catalog No. 0101

Starting
Serial No. **376-69000**

WIRING INSTRUCTIONS
58-01-0643

Specify Catalog and Serial No. when ordering parts

2500 RPM
3 AMPS

FOR CAT. NO. 0101-2
(240V) TOOL USE:

22-18-0375 CARBON BRUSH
18-16-0050 FIELD
16-16-0300 ARMATURE
22-64-4200 CORD SET

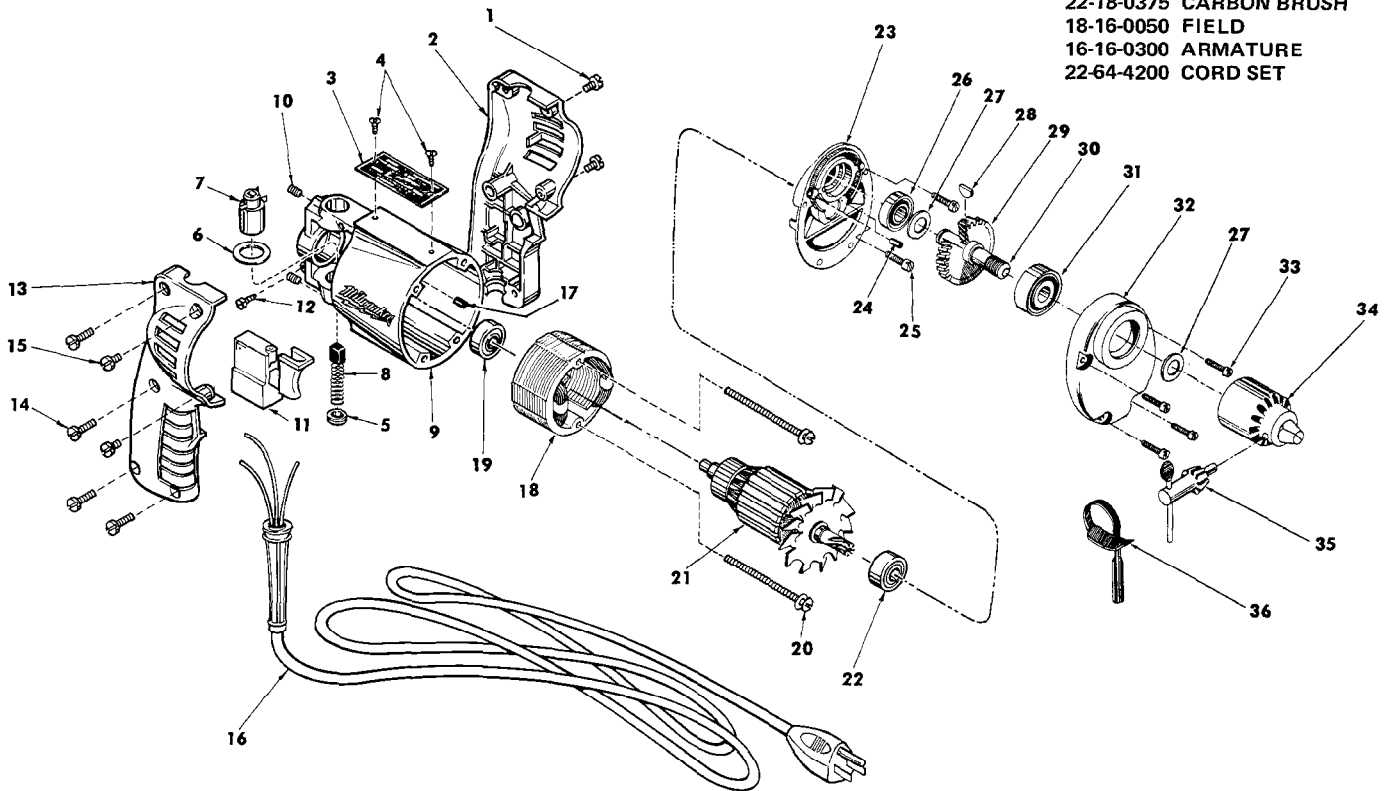


FIG.	PART NO.	DESCRIPTION OF PART	NO.REQ.	FIG.	PART NO.	DESCRIPTION OF PART	NO.REQ.
1	06-81-0452	8-32x3/8 Pan Hd. Screw	(2)	★ 20	06-81-5935	6-32x1-3/4 Fil. Hd. Screw	(2)
2	31-44-0620	L.H. Handle Half	(1)	★ 21	16-10-0300	Armature Assy.	(1)
3	12-99-0020	Nameplate Blank	(1)	22	02-04-0880	Ball Bearing	(1)
4	06-85-0200	Nameplate Screw	(2)	23	28-28-0941	Diaphragm	(1)
5	23-44-0020	Brush Retaining Cap	(2)	24	45-30-0070	Ball Bearing Ret. Slug	(1)
6	23-86-0105	Insulating Washer	(2)	25	06-81-6202	8-32x5/8 Fil. Hd. Screw	(2)
7	22-22-1251	Brush Holder Assy.	(2)	26	02-08-0375	Ball Bearing	(1)
8	22-18-0155	Carbon Brush Assy.	(2)	27	45-88-0250	Washer	(2)
9	28-50-6091	Motor Housing (Incl. Fig. No. 17)	(1)	28	06-42-0400	Woodruff Key	(1)
10	06-83-2430	10-32x1/4 Soc. Hd. Set Screw	(2)	29	32-75-1901	Spindle Gear	(1)
11	23-66-0515	Switch	(1)	30	38-50-5021	Spindle	(1)
12	06-81-8625	Ground Screw	(1)	31	02-04-1040	Ball Bearing	(1)
13	31-44-0610	R.H. Handle Half	(1)	32	28-14-1331	Gear Case Assy.	(1)
14	06-81-0402	8-32x3/4 Pan Hd. Screw	(4)	33	06-81-6300	8-32x7/8 Fil. Hd. screw	(4)
15	06-81-0452	8-32x3/8 Pan Hd. Screw	(2)	34	48-66-0260	Chuck	(1)
16	22-64-0665	Cord Set	(1)	35	48-66-3200	Chuck Key	(1)
17	45-30-0120	Ball Bearing Ret. Slug	(1)	36	48-66-4080	Key Holder	(1)
★ 18	18-10-0050	Field	(1)	37	12-98-7081	Caution Plate (Not Shown)	(1)
19	02-04-0740	Ball Bearing	(1)				