

MODEL: 005625-0  
 GP 7kW PULL START

## EXPLODED VIEW: GP 7KW PORTABLE

DRAWING #: 0H1247

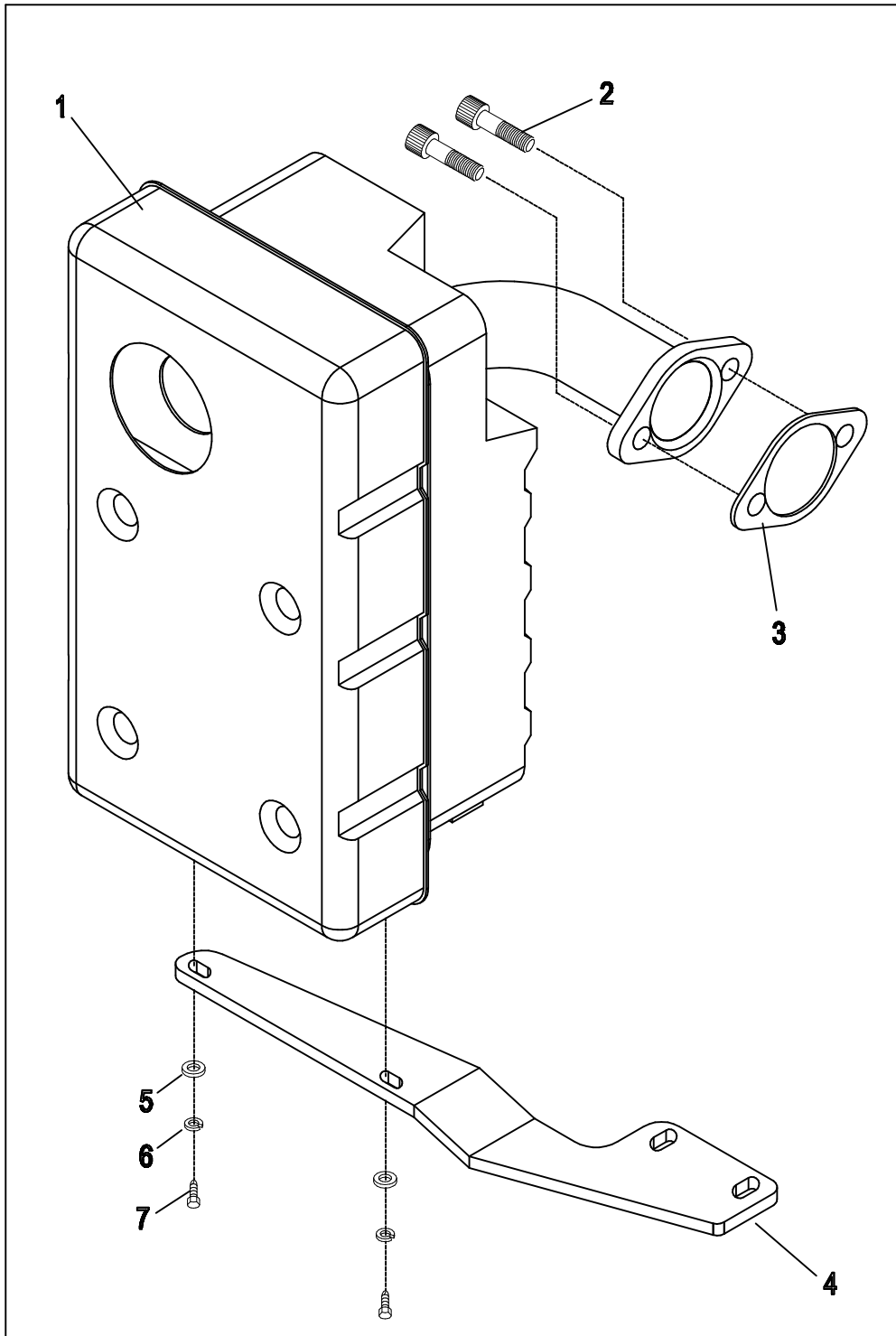
GROUP

APPLICABLE TO: 005625-0

ITEM	PART #	QTY.	DESCRIPTION	ITEM	PART #	QTY.	DESCRIPTION
1	0G8326	1	CRADLE END	47	0G9756	1	RECEPTACLE PANEL
2	0G8328	1	BACK RAIL	48	0G8507	2	OUTLET, 20A 120V DPLX SPECGRADE
3	0H1780	10	CURVED HEAD BOLT M8-1.25 X 42mm LONG	49	0H0265C	2	CB 20A 1P 120V CUL/CSA
4	0H1782	12	CAP NUT M8-1.25	50	0G8321	1	HOUR METER
5	0G8327	1	PANEL RAIL	51	0G9758	1	FUEL HOSE, 4 ID X 8.5 OD X 1 60mm
6	0H0168	1	FRAME ASSEMBLY, STORM SKU	52	0H1613	1	FILTER, FUEL VALVE
7	0H1779	2	SCREW, HHFCS M8-1.25 X 45	53	0H1684	1	VALVE, FUEL SHUTOFF
8	0H1610	4	INSERT, ANTI-CRUSH FOR TANKS	54	0H1345D	1	FUEL GAGE, 115MM LONG ARM
9	0H1411 B	4	RUBBER MOUNT, 10.3 ID X 11mm HEIGHT	55	0G5442	2	SNAP BUTTON-0.437" DIA HEAD
10	022129	3	WASHER, LOCK M8-5/16	56	0H1828B	1	ASSY, HANDLE LEFT HAND
11	022511	3	SCREW, HHC 3/8-16 X 1-1/4	57	0H1781	4	SCREW, CHB M8-1.25 X 4 6mm LONG
12	030209	1	SCREW, HHC 5/16-24 X 1-1/4	58	0H1359	1	PLATE, FUEL GAGE
13	033212	2	SCREW, HHC 5/16-18 X 1-1/4	59	0H1832B	1	ASSY, HANDLE RIGHT HAND
14	046262	3	WASHER, LOCK M10	60	0G8651	2	TIRE, 9.5" DIA RUN FLAT PLASTIC / RUBBER
15	069673 J	8	NUT, LOCK FLANGE 5/16-M8	61	0H0204	2	AXLE PIN, 1/2" X 4" LONG
16	0G8446	1	ALTERNATOR, 7000 WSAE BRUSHLESS	62	0D4999	2	COTTER PIN
17	0G8527	2	VIB MOUNT 1.38 X 1 X 5/16-18 M/F	63	0H1114	1	BENT FOOT, FRAME
18	0G9810	1	ENGINE, GH410 PULL START	64	0H1829	2	VIBRATION MOUNT, 3.81 X 25.4 X M8-12.5
19	0G9832	1	BRACKET, MOUNT 7KW ALTERNATOR	65	052858	4	NUT TOP LOCK FLANGE M8-1.25
20	0G9833	2	VIBRATION MOUNT 1.38 X 1 X 5/16-18 M/M	66	022145	2	WASHER, FLAT 5/16-18 / M8
21	0C7649	1	CLAMP HOSE .38-.87	67	042907	2	SCREW, HHC M8-1.25 X 16
22	022145	2	WASHER, FLAT 5/16-18-M8	68	0H1357	2	SCREW, PFHM M5-0.8 X 12
23	0H1326	1	FUEL FILTER	69			
24	030231	2	SCREW, HHC 5/16-18 X 1-1/2	70			
25	0G0926	2	SCREW, HHFCS M6-1.0 X 16	71			
26	0H2521	1	BRACKET, MUFFLER MOUNT GH410	72			
27	0C7649	1	CLAMP, HOSE 38-.87 (NOT SHOWN-FOR FUEL HOSE)	73			
28	0H4044	1	ENGINE ADAPTOR, 410CC	74			
29	0G84440 101	1	CAPACITOR	75			
30	055414	1	LUG, SOLDERLESS #2-#8 X 17/64	76			
31	0A1658	1	WASHER, LOCK SPECIAL 1/4"	77			
32	0G8382	4	SCREW, PPPH #8-16 X 1/2"	78			
33	0G8753C	1	ASSY, GROUND WIRE ALTERNATOR TO BASE	79			
34	0H9776 B	1	ASSY, CONTROL PANEL, 30 A W/HR MTR	80			
35	092079	1	SCREW, M6-1.0 X 25	81			
36	0H1814	2	WASHER, FLAT 13mm OD X 2.7mm OD	82			
37	0G5445	4	SCREW, HHTT M8-1.25 X 20	83			
38	0G8489	1	ASSY, FUEL TANK 8 GALLON	84			
39	0H1325 A	1	FUEL CAP-VENTED	85			
40	0H3049	1	COVER, ALTERNATOR INLET	86			
41	052618	2	SCREW, HHC M5-0.8 X 12	87			
42	049226	2	WASHER, LOCK M5	88			
43	049815	2	SCREW, HHC M5-0.8 X 16	89			
44	051713	2	WASHER, FLAT M5	90			
45	0G8758	1	OUTLET, 30A 125/250V SPCGR	91			
46	0H0265E	1	CB. 30A 1P 120V	92			

APPLICABLE TO:

MUFFLER OPTION  
ENGINE PRODUCTION LEVEL 9E



**EXPLODED VIEW: MUFFLER, 410 SIDE OUT  
DRAWING #: 0E5081 REV. B**

**GROUP**

**APPLICABLE TO:**

<b>ITEM</b>	<b>PART #</b>	<b>QTY.</b>	<b>DESCRIPTION</b>
1	0E5223A	1	MUFFLER, 410 SIDE-OUT ALUMINIZED
2	0G3730	2	SCREW SHC M8-1.25 X 20 SEMS
3	090239	1	GASKET, EXHAUST
4	0E6047	1	BRACKET, GH410 MUFFLER SUPPORT
5	022473	2	WASHER FLAT ¼ - M6 ZINC
6	022097	2	WASHER LOCK M6 - ¼
7	043146	2	SCREW HHC M6-1.0 X 10 G8.8