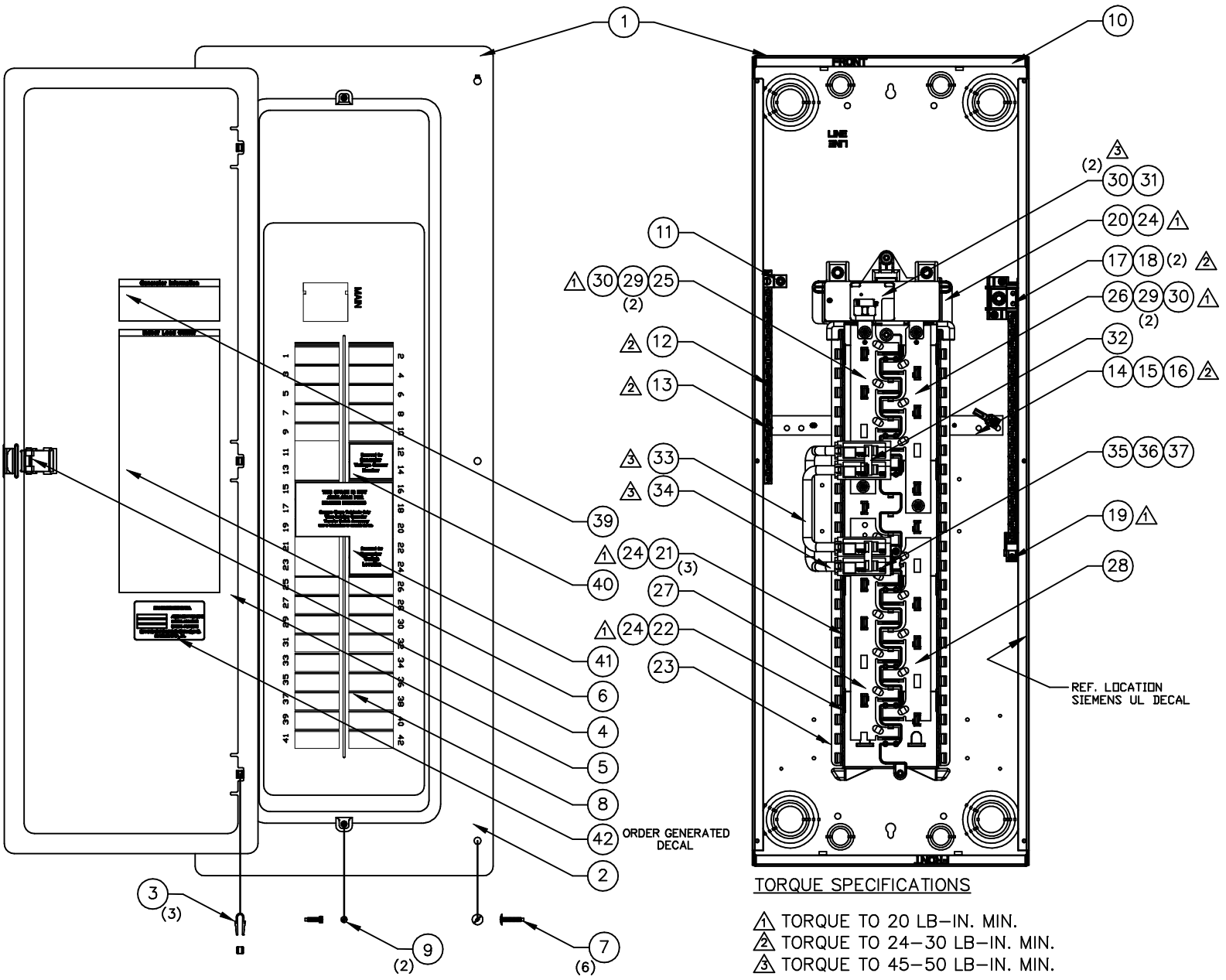


# GROUP C



**EXPLODED VIEW:AV GEN READY LOAD CENTER PANELBD  
DRAWING #: 0G6421AV**

**GROUP C**

**APPLICABLE TO:**

<b>ITEM</b>	<b>PART #</b>	<b>QTY.</b>	<b>DESCRIPTION</b>
1	0G6421	1	GEN READY LOAD CENTER 42 CIRCUIT,200A .
2	0G6421A	1	DOOR T RIM , 42"
3	0G6421B	3	DOOR T RIM , M OLDE D HINGE
4	0J1505	1	DOOR T RIM , LATCH BLANK
5	0G6421D	1	DOOR T RIM , DOOR 42" LC BOX
6	0G6421E	1	DOOR T RIM , DE CAL
7	0G6421F	1	BAG S/A WITH 6 TRIM S CREWS
8	0G6421G	1	UPPER PAN, HIGH AMP 42" ENCL.
9	0G6421H	2	SCREW, 10-32 FLUSH ADJ.(DEADFRONT)
10	0G6421J	1	BOX ASSY, INDOOR L/C 42"
11	0G6421K	1	GROUND BAR W 2/0 LUG, 32 S CREWS
12	0G6421L	1	SCREW- #10-32 X .88 SHWHS TT
13	0G6421M	1	SCREW- #10-32 X 1.00 SHWHS TT
14	0G6421N	1	NEUTRAL TIE STRIP
15	0G6421P	1	BOND-S TRAP
16	0G6421Q	1	SCREW- #10-32 X .375 SHWHS TT
17	0G6421R	1	INSULATED NEUTRAL 41 S CREWS
18	0G6421S	2	SCREW- #10-32 X 7/16 SP PH TAPTITE
19	0G6421T	1	SCREW- #10-32 X .75 CRP HTT
20	0G6421U	1	BASE PAN UPPER MODULE
21	0G6421V	1	BASE PAN MID MODULE (6 POS)
22	0G6421W	3	BASE PAN LOWER MODULE 8 CIR. (4 POS)
23	0G6421X	1	BRIDGE MURRAY LOADCENTER (METAL)
24	0G6421Y	1	SCREW HHTT #10-32 X .562 HHWTT
25	0G6421Z	3	BUSBAR 100-150A CU LH
26	0G6421AA	1	BUSBAR 100-150A CU RH
27	0G6421AB	1	BUSBAR 200A CU LH
28	0G6421AC	1	BUSBAR 200A CU RH
29	0G6421AD	1	STUD,PRESS 1/4-20 X 5/8
30	0G6421AE	4	HEX CONICAL SEMS NUT (1/4-20)
31	0G6421AF	4	CIRCUIT BREAKER 200A 4P 120/240V 22K MAIN
32	0F7888H	1	CIRCUIT BREAKER 125A 2-POLE (SIEMENS)
33	0G6421AH	1	WIREFORM, 1/0 CU UPPER BRIDGE WIRE (SM)
34	0G6421AJ	1	WIREFORM, 1/0 CU LOWER BRIDGE WIRE (LG)
35	0G6421AK	1	SWITCH, 125A 2-POLE MOLDED CASE
36	0G6421AL	1	RETAINER CLIP MAIN BREAKER
37	0G6421AM	1	SCREW, #6 X .19 ROUND HEAD
38	0G6421AN	1	CARTON 42" (NOT SHOWN)
39	0G6421AP	1	GENERATOR INFORMATION, DE CAL
40	0G6421AQ	1	VOLTAGE SENSING CB, DE CAL
41	0G6421AR	1	GEN READY ACCESSORY, DE CAL
42	0G6421A	1	DECAL, GEN-READY LC SERIAL NUMBER

# GROUP C

## TORQUE SPECIFICATIONS

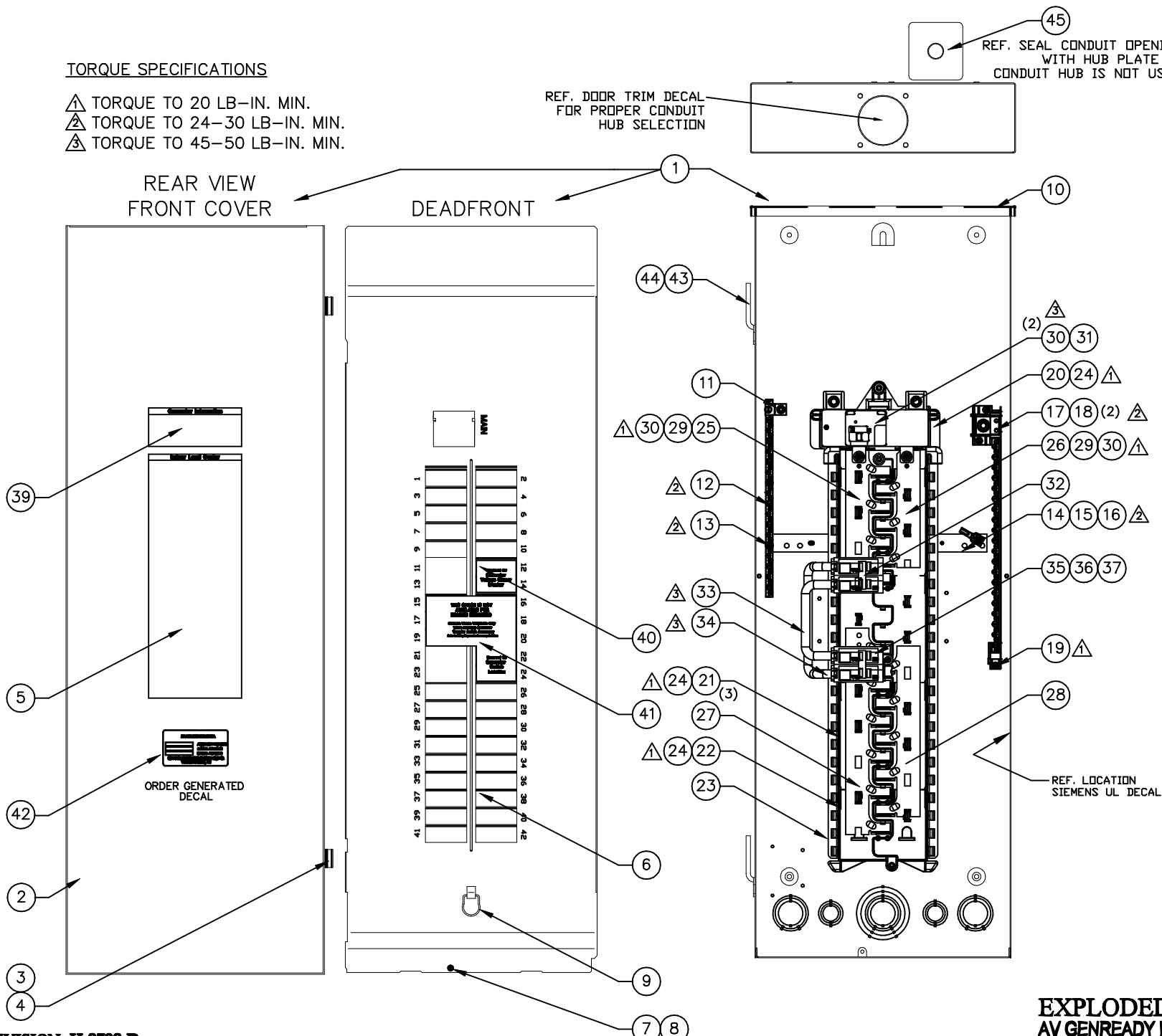
- ⚠ TORQUE TO 20 LB-IN. MIN.
- ⚠ TORQUE TO 24-30 LB-IN. MIN.
- ⚠ TORQUE TO 45-50 LB-IN. MIN.

REF. DOOR TRIM DECAL  
FOR PROPER CONDUIT  
HUB SELECTION

45  
REF. SEAL CONDUIT OPENING  
WITH HUB PLATE IF  
CONDUIT HUB IS NOT USED

REAR VIEW  
FRONT COVER

DEADFRONT



REVISION: H-8798-D  
DATE: 04/19/11

EXPLODED VIEW:  
AV GENREADY LOAD CTR PANELBD 3R  
DRAWING #: 0H4975AV

**EXPLODED VIEW:AV GENREADY LOAD CTR PANELBD 3R  
DRAWING #: 0H4975AV**

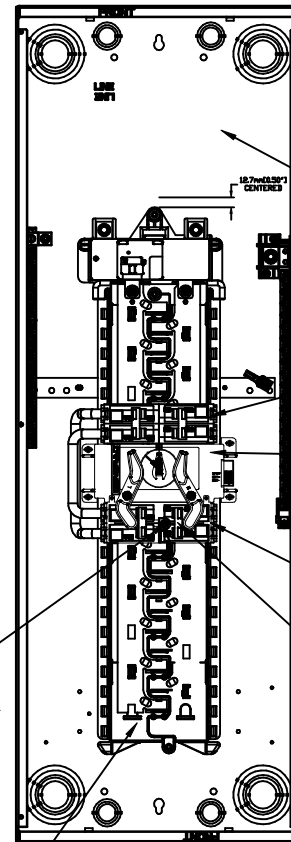
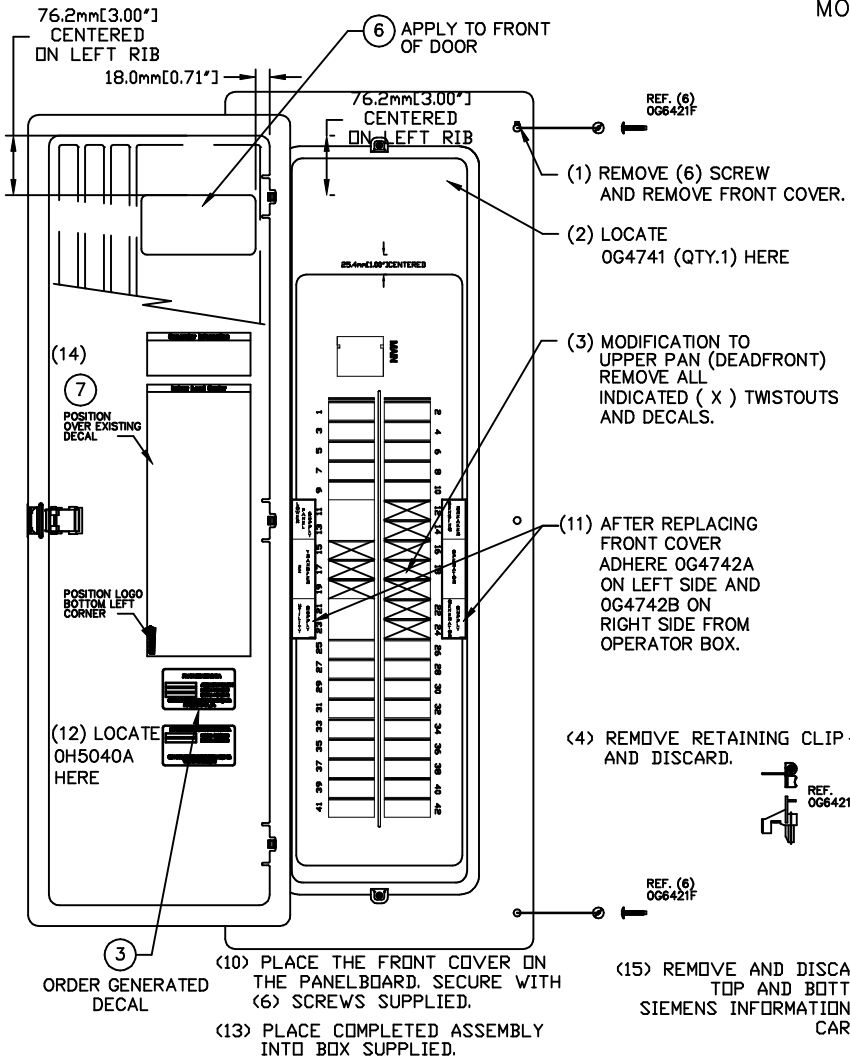
**GROUP C**

**APPLICABLE TO:**

<b>ITEM</b>	<b>PART #</b>	<b>QTY.</b>	<b>DESCRIPTION</b>
1	0H4975	1	GENREADY LC NEMA 3R 42 CIRCUIT ,200A SW.
2	0H4975A	1	DOOR TRIM ,42"
3	0H4975B	2	DOOR TRIM HINGE - FEMALE
4	0H4975C	4	RIVET, DOOR TRIM, HINGE
5	0H4975D	1	DOOR TRIM, DECAL
6	0H4975E	1	UPPER PAN, 42" ENCL. NEMA 3R
7	0H4975F	1	SCREW, #10-32 (DEADFRONT)
8	0H4975G	1	WASHER - RETAINING
9	0H4975H	1	COVER PULL (DEADFRONT)
10	0H4975J	1	BOX ASSY, OUTDOOR L/C 42"
11	0G6421K	1	GROUND BAR W 2/0 LUG, 32 SCREWS
12	0G6421L	1	SCREW- #10-32 X .88 SHWHSTT
13	0G6421M	1	SCREW- #10-32 X 1.00 SHWHST T
14	0G6421N	1	NEUTRAL TIE STRIP
15	0G6421P	1	BOND-STRAP
16	0G6421Q	1	SCREW- #10-32 X .375 SHWHST T
17	0G6421R	1	INSULATED NEUTRAL 41 SCREWS
18	0G6421S	1	SCREW- #10-32 X 7/16 SPPH TAPTIT E
19	0G6421T	1	SCREW- #10-32 X .75 CRPHTT
20	0G6421U	2	BASEPAN UPPER MODULE
21	0G6421V	1	BASEPAN MID MODULE (6 POS)
22	0G6421W	1	BASEPAN LOWER MODULE 8 CIR (4 POS)
23	0G6421X	1	BRIDGE MURRAY LOADCENTER (METAL)
24	0G6421Y	3	SCREW HHTT #10-32 X .562 HHWTT
25	0G6421Z	1	BUSBAR 100-150A CU LH
26	0G6421AA	1	BUSBAR 100-150A CU RH
27	0G6421AB	3	BUSBAR 200A CU LH
28	0G6421AC	1	BUSBAR 200A CU RH
29	0G6421AD	1	STUD, PRESS 1/4-20 X 5/8
30	0G6421AE	1	HEX CONICAL SEMS NUT (1/4-20)
31	0G6421AF	1	CIRCUIT BKR 200A 2P 120/240V 22KA MAIN
32	0F7888H	2	CIRCUIT BKR 125A 2-POLE (SIEMENS)
33	0G6421AH	2	WIREFORM, 1/0 CU UPPER BRDG WIRE (SM)
34	0G6421AJ	1	WIREFORM, 1/0 CU LOWER BRDG WIRE (LG)
35	0G6421AK	1	SWITCH, 125A 2-POLE MOLDED CASE
36	0G6421AL	1	RETAINER CLIP MAIN BREAKER
37	0G6421AM	1	SCREW, #6 X .19 ROUND HEAD
38	0G6421AN	1	CARTON 42"
39	0G6421AP	1	GENERATOR INFORMATION, DECAL
40	0G6421AQ	1	VOLTAGE SENSING CB, DECAL
41	0G6421AR	1	GEN READY ACCESSORY, DECAL
42	0G6215C	1	DECAL, GENREADY LC SERIAL # NEMA 3R
43	0H4975K	1	BOX ASSY. HINGE - MALE
44	0H4975L	1	SCREW - #10-32
45	0J0877	1	COVER CONDUIT HUB NEMA 3R

# GROUP B

## REF. GEN READY MULTI-BREAKER PANELBOARD/OPERATOR NEMA 1 MODEL # 05449-2

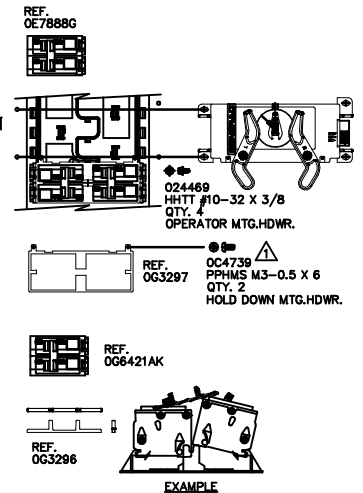


### TORQUE SPECIFICATIONS

- △ TORQUE TO 20 LB-IN. MIN.
- △ TORQUE TO 24-30 LB-IN. MIN.
- △ TORQUE TO 45-50 LB-IN. MIN.

### NOTE:

- \* PLACE ALL LOOSE ITEMS REMAINING WITH THE OPERATOR AND THE LOAD CENTER:
  - 1. INSTALLATION INSTRUCTION
  - 2. 5 AMP FUSE ASSEMBLY
  - 3. FUSE DECAL
  - 4. SIEMENS LOAD CENTER BREAKER DECAL AND INSTRUCTION.
- INTO A PLASTIC BAG AND PLACE INSIDE LOAD CENTER DOOR.
- \*\* FOR PRODUCTION TESTING ONLY. (DO NOT SHIP WITH UNIT)



**EXPLODED VIEW:EV GENREADY MULTI-BKR LC PB W/OPR NEMA 1  
DRAWING #: 0J1497A**

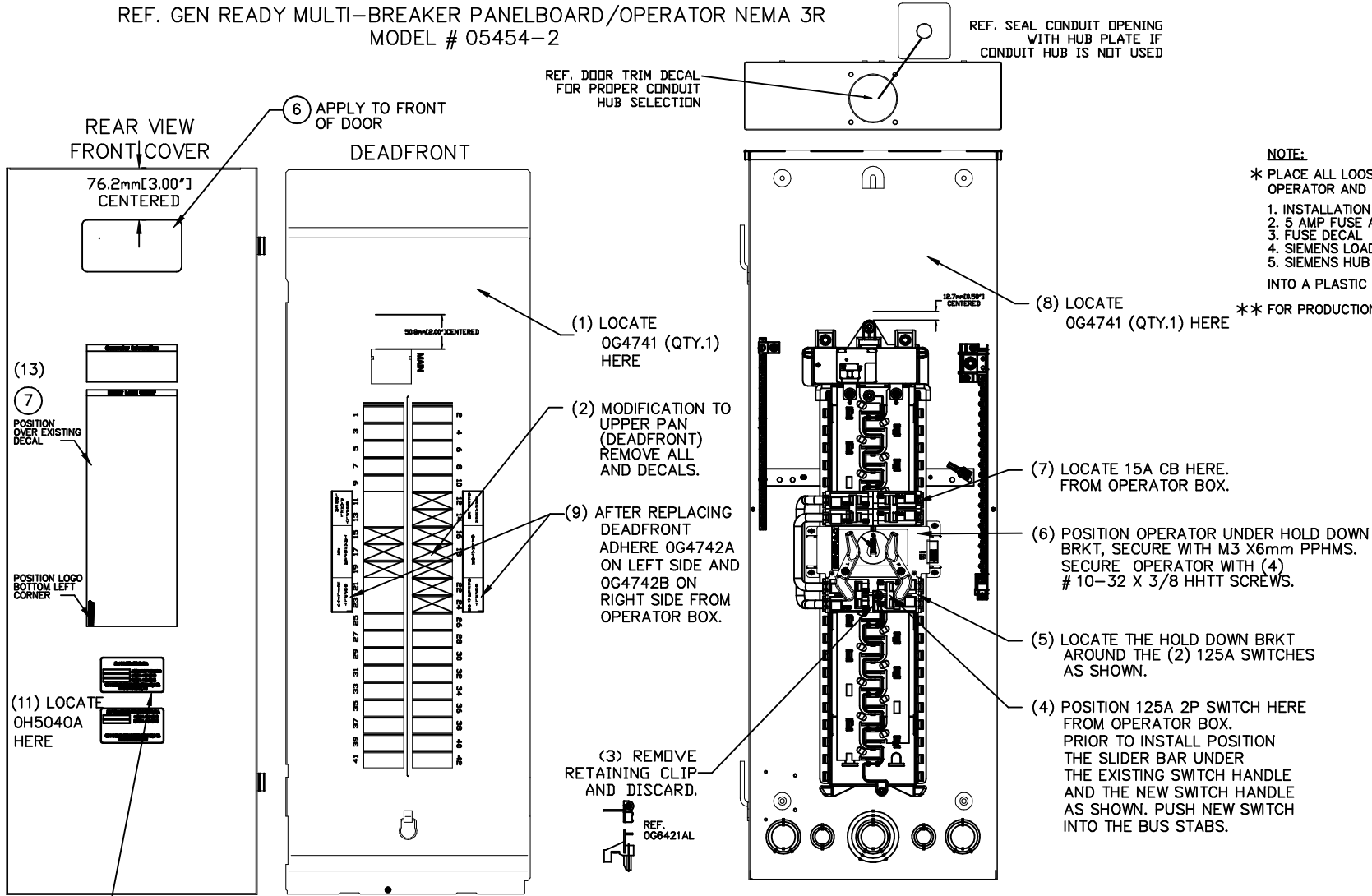
**GROUP B**

**APPLICABLE TO:**

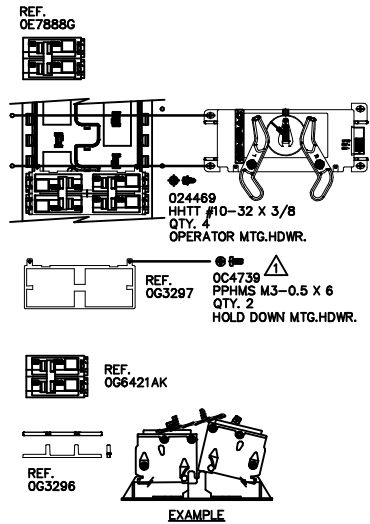
<b>ITEM</b>	<b>PART #</b>	<b>QTY.</b>	<b>DESCRIPTION</b>
1	0G6420	1	EZ TRANSFER OPERATOR
2	0G6421	1	GEN READY MULTI-BKR PB NEMA 1
3	0G6215B	1	DECAL, GEN READY LC SERIAL NUMBER
4	044075	1	BAG ZIP 10 X 12 2MIL
5	0G4745	1	PRODUCTION TEST PROCEDURE
6	0H5371	1	DECAL BRAND GENREADY
7	0J0777	1	DECAL GEN-READY MULTI-BKR

# GROUP B

REF. GEN READY MULTI-BREAKER PANELBOARD/OPERATOR NEMA 3R  
MODEL # 05454-2



**NOTE:**  
\* PLACE ALL LOOSE ITEMS REMAINING WITH THE OPERATOR AND THE LOAD CENTER:  
1. INSTALLATION INSTRUCTION  
2. 5 AMP FUSE ASSEMBLY  
3. FUSE DECAL  
4. SIEMENS LOAD CENTER BREAKER DECAL AND INSTRUCTION.  
5. SIEMENS HUB PLATE AND INSTRUCTION.  
INTO A PLASTIC BAG AND PLACE INSIDE LOAD CENTER DOOR.  
\*\* FOR PRODUCTION TESTING ONLY. (DO NOT SHIP WITH UNIT)



**TORQUE SPECIFICATIONS**  
▲ TORQUE TO 20 LB-IN. MIN.  
▲ TORQUE TO 24-30 LB-IN. MIN.  
▲ TORQUE TO 45-50 LB-IN. MIN.

(3) ORDER GENERATED DECAL

(10) PLACE THE FRONT COVER ON THE PANELBOARD. SECURE WITH ATTACHED SCREW.  
(12) PLACE COMPLETED ASSEMBLY INTO BOX SUPPLIED.

REVISION: -A-  
DATE: 04/19/11

**EXPLODED VIEW:**  
**GENREADY MULTI-BKR LC PB W/OPR NEMA 3R**  
**DRAWING #: 0J1499A**

**EXPLODED VIEW: GENREADY MULTI-BKR LC PB W/OPR NEMA 3R  
DRAWING #: 0J1499A**

**GROUP B**

**APPLICABLE TO:**

<b>ITEM</b>	<b>PART #</b>	<b>QTY.</b>	<b>DESCRIPTION</b>
1	0G6420	1	EZ TRANSFER OPERATOR
2	0H4975	1	GEN READY MULTI-BKR LC PANELBD NEMA 3R
3	0G6215D	1	DECAL, GEN READY LC SERIAL NUMBER
4	044075	1	BAG ZIP 10 X 12 2MIL
5	0G4745	1	PRODUCTION TEST PROCEDURE
6	0H5371	1	DECAL BRAND GENREADY
7	0J0777	1	DECAL GEN-READY MULTI-BKR